

## Media Release

Mundaring Arts Centre, Western Australia



**Subject: The Shire of Mundaring Art Acquisition Exhibition (Invitational)**  
**Dates: 13 March – 12 April 2009**

*Collections are the heart and soul of a nation.*

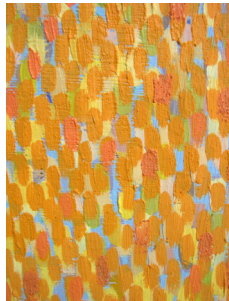
*Collections hold the historical evidence from which communities build their understanding of Australian values and identity. They shape our psyche, record our development, provide insight into our national spirit and values, and inspire us for the future.*

*Sue Natrass AO, Chair of the Collections Council of Australia*



Over the past 25 years, the Shire of Mundaring has built a diverse collection of artworks that reflect the rich vein of artistic talent at work in the Perth Hills community. Currently, the collection comprises well over 100 artworks including paintings, watercolours, printed works on papers, photographs, sculpture, ceramics, textiles, silver and wood crafts.

Each year the Mundaring Arts Centre organises an exhibition on behalf of the Shire of Mundaring, to provide the Shire with an opportunity to shape and strengthen the existing collection. The format of this annual event alternates between an open, invitational and a retrospective exhibition format. As 2009 is an invitational year, and the 30<sup>th</sup> anniversary of the Mundaring Arts Centre's establishment, the Arts Centre has invited a selection of artists who are all former or current residents of the Shire of Mundaring, many of whom are recognised as having made a vital contribution to the success and longevity of the Arts Centre in particular.



In keeping with our aim of building upon the strengths of the Collection as a reflection of the depth and diversity of artistic talent in the hills community, all invited artists have yet to be acquired into the Shire of Mundaring's art holdings, and represent a broad scope of mediums. The invited artists include Jenny Armati, Denise Brown, Lyne Graham, Guy Grey-Smith(dec), Thornton Hick, Kieran Ingram, Joel Smoker, Clare Stroud, Michele Theunissen and Roy Weston; the Shire's artwork acquisition(s) are announced at the official exhibition opening on 13 March.

The Mundaring Arts Centre is situated in the heart of Mundaring at 7190 Great Eastern Hwy. Featuring a gallery gift shop with a range of locally made artworks by WA artists, the Mundaring Arts Centre is open daily with free entry from 10 am – 5 pm weekdays; 10 am – 4 pm weekends. For further information please call 08 9295 3991 or visit [www.mundaringartscentre.com](http://www.mundaringartscentre.com)



### End of release

Images: Jenny Armati, *Cloudburst* (detail), acrylic and oil on canvas;  
Thornton Hick, *Botanica Splendifica*, Jarrah burl, rock sheoak, blackbutt, native seeds, acrylic, gold leaf;  
Michele Theunissen, *WA Christmas Tree* (detail), acrylic, found pigments, oil on canvas;  
Roy Weston, *Yachting Scene*, Gouache on Arches paper

Media Contact: Clare Stroud [08] 9295 3991 or [cstroud@mundaringartscentre.com](mailto:cstroud@mundaringartscentre.com)  
Exhibition Curator: Catherine Czerw [08] 9295 3991 or [cczerw@mundaringartscentre.com](mailto:cczerw@mundaringartscentre.com)  
Authorised for release: Jenny Haynes, Director, Mundaring Arts Centre

### Mundaring Arts Centre

7190 Great Eastern Hwy Mundaring WA 6073

T: [08] 9295 3991 F: [08] 9295 3994 [info@mundaringartscentre.com](mailto:info@mundaringartscentre.com) [www.mundaringartscentre.com](http://www.mundaringartscentre.com)

Open 7 days a week Mon – Fri 10 am – 5 pm; Sat – Sun 10 am – 4 pm

As a not-for-profit organisation, the Mundaring Arts Centre has Gift Recipient Status;

Any donation over \$2 is Tax Deductible. Your donation will help us support our local artists.