



SHIRE OF MUNDARING

The Heart of the Hills

Advocacy Priorities 2024-2025

mundaring.wa.gov.au



The Place for Sustainable Living

Located just 35 kilometres from the Perth CBD and close to both Midland and Perth Airport, the Shire of Mundaring is strategically positioned to support the State and Federal Government in achieving housing diversity and fostering economic diversification.

Regionally, the Shire serves as the gateway to the Wheatbelt, presenting an opportunity to become a hub for State Government services, including healthcare. With its beautiful natural scenery, the Shire offers an ideal place to live, visit and work, combining the tranquillity of nature with the convenience of city proximity.

Shire of Mundaring



Community profile

SUBURBS

23

IN SHIRE



WORKING POPULATION

63.2%

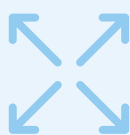
AGED 15-64



SIZE OF SHIRE

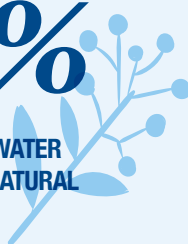
645

KILOMETERS²



46%

NATIONAL PARK, WATER
CATCHMENT OR NATURAL
RESERVE



MEDIAN HOUSEHOLD MORTGAGE REPAYMENT

\$1950

PER MONTH



RESIDENTS AGED 60+

9,715



POPULATION

41,421



20.7%

OF COMMUNITY 15+ VOLUNTEER



BUSINESSES

3,134



RESIDENTS BORN OVERSEAS

9,331



Mundaring Town Centre Revitalisation

Opportunity

The Shire has a unique opportunity to revitalise our Town Centre, positioning Mundaring for a future that embraces tourism. This transformation will link Mundaring's renowned Sculpture Park, walking tracks, trails, and sustainable residential options. The heart of Mundaring will become an arts, culture, and community showpiece, promoting economic growth and increased tourism. This project addresses high-priority areas identified in the 2024 Markyt Community Scorecard survey, including environment, sustainability, trails, streetscapes, growth, facilities for seniors, and art and culture.

Central to this initiative is the new Cultural Hub, which will showcase local artists and artisans, celebrate our rich heritage, and attract tourism. The project will stimulate investment in housing density and meet the demand for Aging in Place by attracting retirement living, aged care, and independent living in the heart of Mundaring. Surrounding land will be available for mixed-use development once current services are consolidated into the new Hub.

This project will create a contemporary heart and identity for Mundaring, celebrating our past and planning for our future. The multi-story, multi-purpose Cultural Hub will include an arts gallery, visitor centre, local history museum, contemporary library, wellness clinic, and community spaces. Commercial spaces will help offset servicing costs. This vibrant community cultural hub will be a catalyst for economic growth and local jobs, making Mundaring a notable arts and cultural destination.

Expected outcomes:

- A revitalised and sustainable cultural arts hub
- Boosted tourism and visitor experiences
- Attracted private investment and economic growth
- Strengthened community connection and engagement
- Enhanced infrastructure and connectivity

Timeline

Stage 1 Community needs, land assembly, concept planning and community consultation FY22

▶ **Stage 2** MCH planning and design, secure funding and commence precinct upgrades FY24-FY25

Stage 3 Detailed design/construction of MCH and precinct upgrades complete FY25-FY28

Stage 4 Launch of Cultural Precinct and Mundaring Cultural Hub FY28

Funding Request

Mundaring Cultural Hub – including Art Gallery and Museum, Digital Resource Hub (library), Community Health Clinic and Visitor & Cultural Centre (\$23m).

Cultural precinct including Amphitheatre redevelopment (\$300,000) and streetscape, landscape and place making (\$1.7m).

Conversion of land from reserve to freehold to facilitate private investment.

Total project cost: \$25 million

Council commitment: \$12 million

Current Funding Gap: \$13 million



INCREASED HOUSING



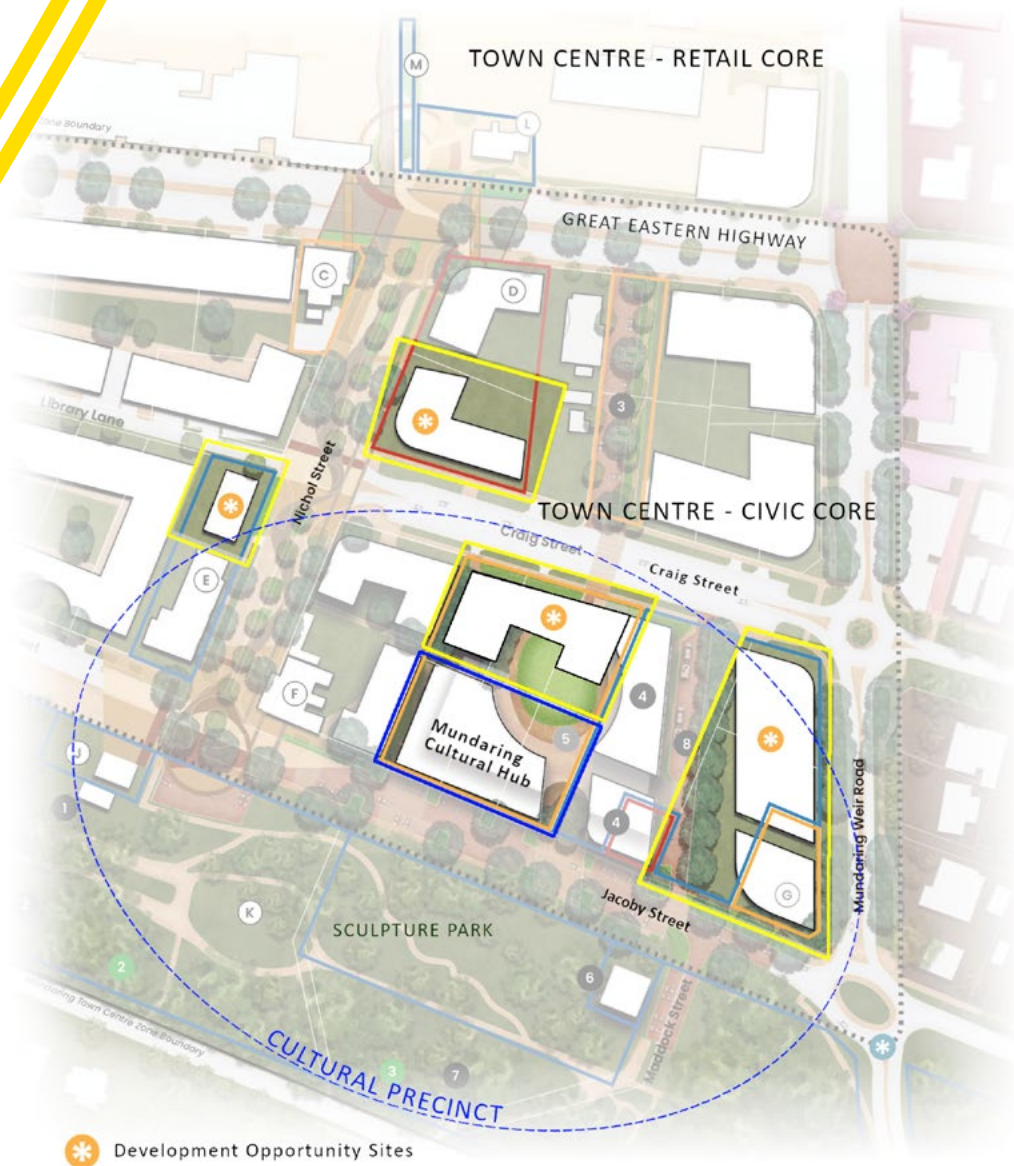
ECONOMIC GROWTH & TOURISM



YOUTH & SENIORS



HERITAGE, ARTS & CULTURE



2 Enhancing Telecommunications Connectivity and Power Reliability

Opportunity

Provide funding to eliminate telecommunications blackspots and implement a pilot off-grid power system in the Shire of Mundaring, enhancing safety, emergency preparedness, and community resilience.

Expected outcomes:

- Reliable telecommunications for residents, businesses and emergency services
- Off grid power system ensures that communications are continuous during emergencies
- Sustainable energy solution
- Improved emergency preparedness
- Strengthened infrastructure making the community more resilient to natural disasters

Project Overview

This project seeks Federal Government support to eliminate telecommunications blackspots in the Shire of Mundaring and fund a \$500,000 pilot off-grid power supply system at a Volunteer Bushfire Station. Enhancing telecommunications and exploring resilient, alternative power solutions will improve safety, emergency preparedness, and overall community resilience in the Perth Hills.

What is the community need?

Despite being 35km from Perth and 20 km from Perth International Airport, the Shire of Mundaring experiences significant telecommunications issues in the areas of Parkerville, Stoneville, Darlington, Wooroloo, Hovea, parts of Mundaring, Mt Helena, and Glen Forrest. These issues pose daily safety risks for our youth and seniors as well as expensive satellite connection costs being in bushfire-prone area, the lack of reliable telecommunications is a severe threat to community safety. The State DFES system relies on mobile text alert systems, which cannot reach residents without phone coverage. Addressing this issue is a matter of priority.

Telecommunications are critical for ensuring the safety of residents and the efficiency of emergency volunteers during emergencies.

Reliable, fast, and cost-effective telecommunications are essential for promoting home-based businesses and workforces, as outlined in the Shire's Economic Development Strategy.

Request

Federal Government funding for telecommunications infrastructure and \$500,000 to support the implementation of a pilot off grid power supply system.



COMMUNITY SAFETY



IMPROVED INFRASTRUCTURE



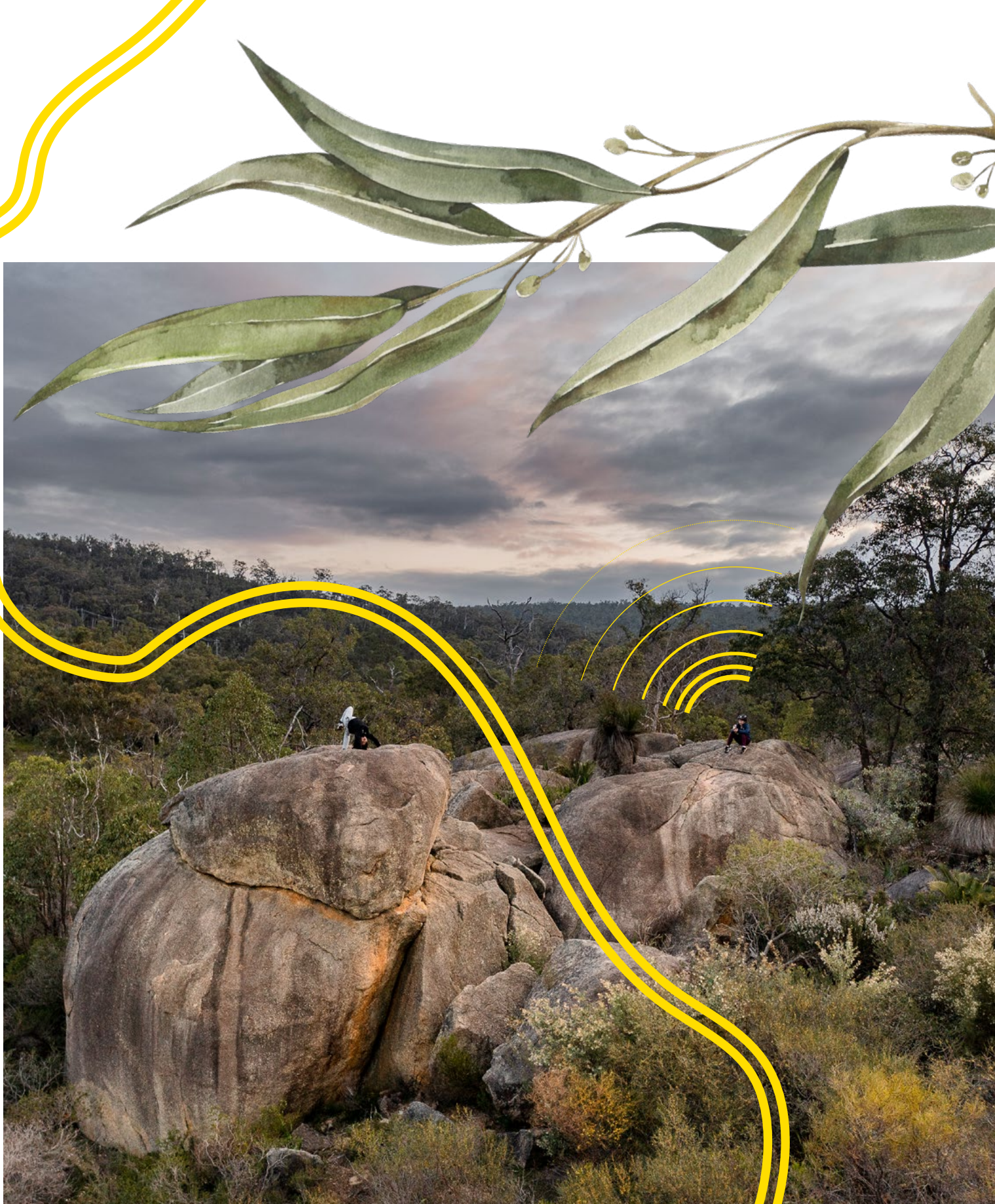
COMMUNITY CONNECTIVITY



ECONOMIC DEVELOPMENT



DISASTER PREPAREDNESS



Brown Park Precinct Upgrade

Opportunity

Upgrade the sporting precinct to enhance accessibility, diversity, and amenities, creating a more inviting and functional public space.

Expected outcomes:

- Provide opportunities for disengaged youth and first nations people to connect with community
- Increased participation in sports, especially young women
- Improved traffic flow and parking
- Diverse community
- Inclusive user-friendly public spaces

Project Overview

Brown Park is an important community facility to more than 8,000 Swan View residents, and a catchment area of double that. Despite its importance, the precinct currently suffers from outdated and disconnected facilities, including limited undercover areas for sports. Upgrading Brown Park is essential to meet the evolving needs of the community and to enhance its overall functionality.

Key components:

- Undercover multi-marked courts, new youth pavilion, skate park, bike pump, landscaping etc
- New sports club/pavilion, reestablished lower oval and associated landscaping
- Relocated and new cricket nets
- New retaining wall and fenced dog park
- New 'community shed', public toilets and food garden
- New 'veranda', kiosk/kitchen, public toilets and internal modifications

- New paths, external exercise stations, covered seating, BBQ's etc
- New parking areas
- New lights to oval

What's the community need?

The Shire of Mundaring has seen a significant increase in the number of junior and senior sports teams wanting to utilise the space at Brown Park. This growth necessitates improved and expanded facilities to accommodate the rising demand.

The area around Brown Park faces a high crime rate and a considerable number of disengaged youths. Enhancing the facilities will provide a safe and engaging environment for young people, helping to reduce crime and promote positive community engagement.

Brown Park is used by a wide range of community groups, including Binar Futures, an Aboriginal sporting organisation that encourages Aboriginal youth to build positive futures for themselves, their families, communities, and culture through sport. Upgrading the park will support the efforts of such organisations in fostering community connection and sense of belonging.

Funding Request

Sports pavilion and gender-neutral change facilities: \$6.40 million

Undercover multi-marked courts: \$4 million

Skate Park/pump track: \$0.7 million

Fenced dog park: \$0.36 million

New car parking: \$1.10 million

Council commitment: \$2 million



ACCESS & GENDER EQUITY



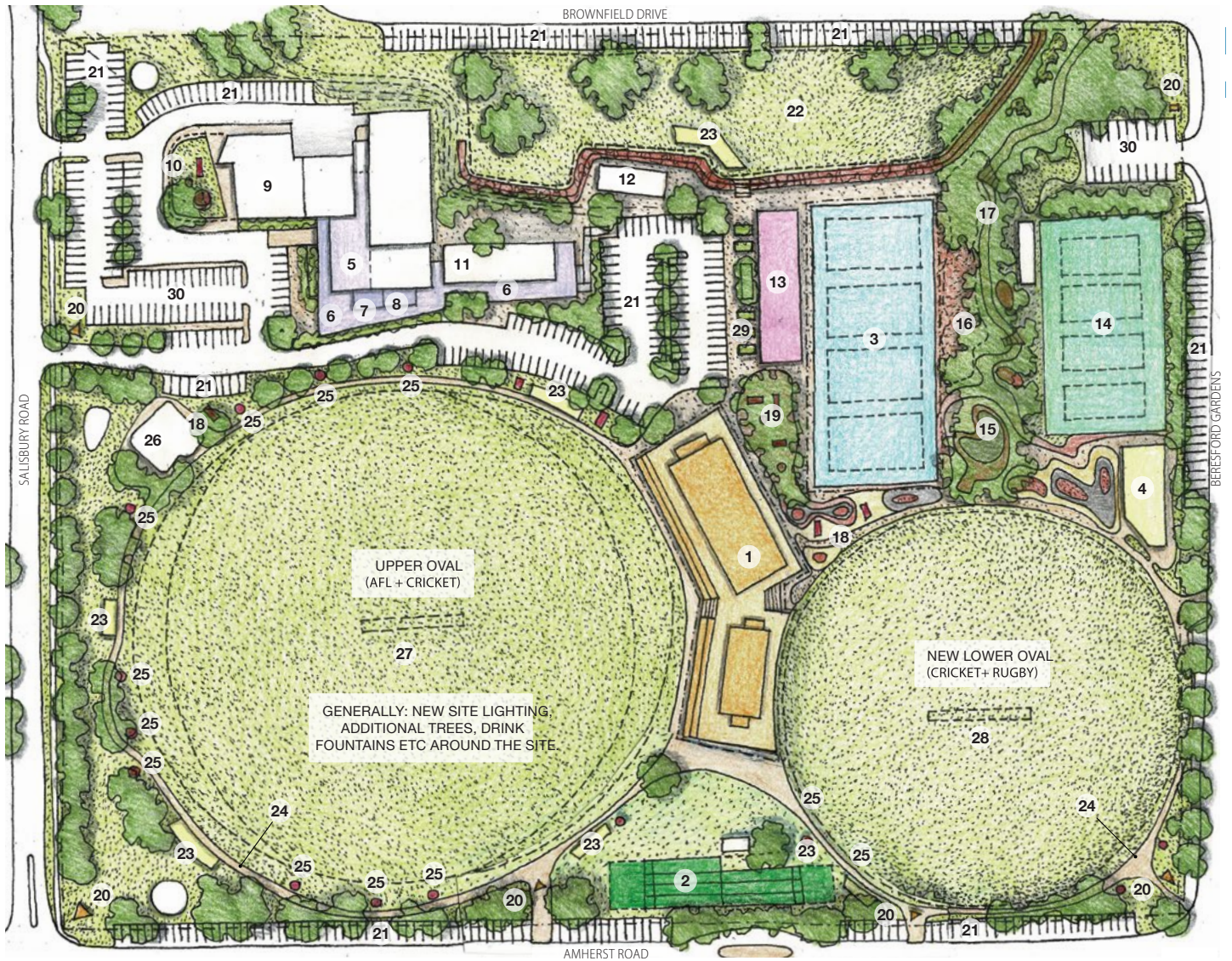
COMMUNITY CONNECTION



HEALTH AND WELLBEING



YOUTH



MASTERPLAN

LEGEND

- | | | | |
|--|--|--|---|
| 1 New 2 storey clubhouse/change/stores/meeting/public WCs on ground + club/function room/kitchen/toilets/meeting room/s etc on first | 6 New 'verandah' | 14 Existing tennis courts (potential future parking) | 23 Seating pavilion |
| 2 New cricket nets/store (up to 7 nets) | 7 New 'kiosk/kitchen' | 15 Skate park | 24 Path |
| 3 4 x undercover multi-marked courts (potentially enclosed in future) | 8 New public toilets | 16 Bike pump track | 25 Outdoor exercise station |
| 4 Undercover skate park pavilion (potential future Youth Centre) | 9 Existing Swan View Youth Centre (Playgroup to share) | 17 'The creek' landscape + nature play | 26 Existing playground |
| 5 Internal modifications to existing Brown Park Community Centre | 10 Lawn/play area | 18 BBQ's | 27 Existing upper oval + new lighting |
| | 11 Existing Brock Pavilion | 19 Nature play | 28 New sized/located lower oval, lighting etc |
| | 12 Existing Cattle Shed | 20 Gateway signage | 29 Community garden |
| | 13 New 'community shed' + public toilets | 21 New parking | 30 Existing parking |
| | | 22 New fenced dog park | |

4 Universal Sporting Clubrooms

Opportunity

Upgrade outdated and aging clubrooms to universal sporting clubrooms throughout the Shire to foster inclusivity and accessibility, enhancing community cohesion and encouraging greater participation in sports.

Expected outcomes:

- Increased participation in sport and recreation, especially young women
- Improved accessibility for all users
- Inclusive and safe environment

Project Overview

The Shire of Mundaring is committed to revitalising its sports infrastructure with a focus on inclusivity and modernity. Council has committed to undertaking staged upgrades, prioritising four of the community's most utilised facilities: Glen Forrest, Mt Helena, Boya an Mundaring. Our current infrastructure, over 30 years old, is outdated and lacks inclusivity, particularly for women and underrepresented groups.

Modern, universal sporting clubrooms are essential for providing equal access to sports for all community members, regardless of gender, age, or ability. Inclusive facilities will create a welcoming environment, support diverse activities, and encourage healthy lifestyles and social interaction, enhancing the overall well-being of residents. The upgrades aim to address the growing participation in junior and senior sports throughout the Shire, especially among women. For example, the Glen Forrest Women's Cricket Team, which has been a grand finalist for the past two years, requires suitable facilities to host matches and attract more participants.

The Mt Helena Junior Football Club collaborates with Inclusion Solutions to break down barriers for children with disabilities, but the lack of wheelchair access to the oval or pavilion highlights the urgent need for inclusive infrastructure. By upgrading our sporting facilities, we can create opportunities for all community members to participate in sports, encourage women's participation, and support inclusive programs. These enhancements will foster a healthier, more connected community and ensure the growth and success of local sports programs.

Funding Request

Project 1: Mt Helena, Elsie Austin Changeroom Upgrade \$2.5 million

Project 2: Mundaring Sports Club Upgrade \$1.96 million

Project 3: Glen Forrest Change Room Upgrade \$2.5 million

Project 4: Boya Oval Changeroom Upgrade \$1.8million



ACCESS & GENDER EQUITY



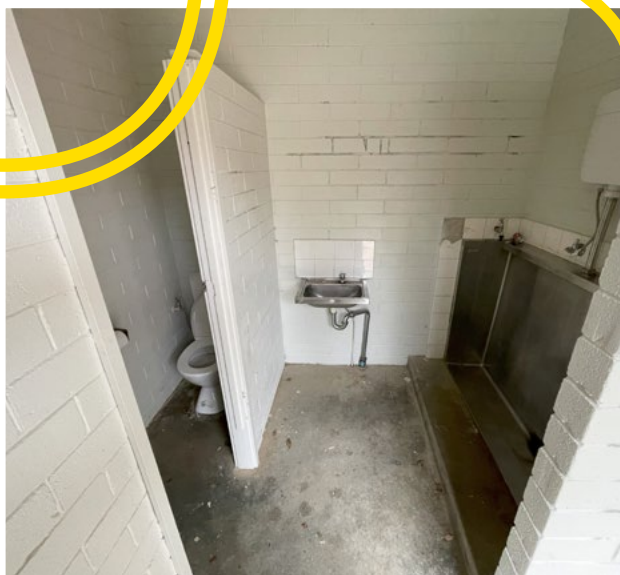
COMMUNITY CONNECTION



HEALTH AND WELLBEING



YOUTH



5

Volunteer Bushfire Brigade Stations

Opportunity

Enhance the emergency services infrastructure in the Shire of Mundaring, a bushfire prone region, to strengthen community preparedness and response capabilities in the face of natural disasters.

Expected outcomes:

- Emergency Services facilities that are fit for purpose and increase participation from the community
- Provision of change rooms suitable for the increasing number of female volunteers
- Provide a safe environment for our community
- Provide safe working conditions for our volunteer firefighters
- Provide facilities that can accommodate necessary equipment

Project Overview

New construction or significant modification to existing fire stations in the Shire of Mundaring.

Key components include upgrades to existing.

- Fire Engine Bay areas
- Amenities and changerooms
- General equipment and HAZMAT storage

What's the community need?

The Shire of Mundaring, a recognised bush fire prone area, has faced two devastating bushfires in the past decade: the Parkerville bushfire in January 2014, which destroyed 57 homes, and the Wooroloo bushfire in 2021, which destroyed 86 homes and damaged more than 100 other structures in its path. These events, mitigated by dedicated local bushfire volunteers, highlight the critical need for updated infrastructure. Despite having ten brigades, eight Bushfire Stations, and 410 registered bushfire fighters, four of the stations are over 30 years old and no longer fit for purpose.

Despite the WA Emergency Service levy, only approximately \$2.35 million of Shire ratepayer funds are allocated to bushfire management, underscoring the need for additional support to ensure community safety.

Funding Request

Wooroloo: Modify & extend existing station \$0.75 million

Parkerville: Demolish station and rebuild on same site \$1.75 million

Glen Forrest: Extend existing station or build new station \$0.75 million - \$1.5 million on new site

Darlington: Amenities, changerooms \$0.35 million

Chidlow: Amenities, changerooms, HAZMAT storage \$0.35 million

Mount Helena: Amenities, changerooms, HAZMAT storage \$0.35 million



GENDER EQUITABLE FACILITIES



EMERGENCY RESPONSE



COMMUNITY SAFETY



VOLUNTEER ENGAGEMENT



6

Upgrade of Mundaring Wastewater Treatment Plant

Opportunity

Expand the capacity of the Mundaring Wastewater Treatment Plant to support housing and accommodation growth within the Mundaring Town Centre as part of a larger revitalisation project.

Expected outcomes:

- Increased housing and accommodation capacity in Mundaring Town centre
- Enhanced wastewater management efficiency
- Support for urban revitalisation and economic growth

Project Overview

The Shire is requesting the Water Corporation to review options for increasing the capacity of the Mundaring Wastewater Treatment Plant to accommodate growth in Mundaring. Additionally,

the Shire asks the Department of Water and Environmental Regulation to review the 2007 Mundaring Weir Catchment Area Drinking Water Source Protection Plan to explore the potential use of treated wastewater on the Mundaring Golf Course.

What is the community need?

The Mundaring Wastewater Treatment Plant, serving 90 dwellings with capacity for 90 more, is a barrier to medium to long-term growth. Expanding the plant is crucial to support the Shire's goals of revitalising the town centre, creating diverse housing opportunities, and ensuring sustainable development and economic growth.



IMPROVED INFRASTRUCTURE



SUSTAINABILITY



INCREASED HOUSING



Helena River Parkland Masterplan

Opportunity

Develop a Helena River Parkland masterplan that compliments the State Government's Helena River Urban Expansion Strategy to maximise the use of the parklands, fostering a balanced mix of developments including housing, commercial spaces, and community facilities.

Expected outcomes:

- Diverse housing options for new and existing residents, in an area suited to rapid housing growth
- Strategic future planning to support the Shires vision
- New commercial spaces to boost local business and employment
- Preservation and integration of natural landscapes

Project Overview

The masterplan is proposed to cover 11 precincts, will be guided by site investigations and Metropolitan Region Scheme amendments, and proposes phased development in Bellevue and Helena Valley. The Foreshore Vision Plan envisions the Helena River and its foreshore as a continuous

recreational space and ecological corridor with interconnected activity nodes. Key elements include sporting fields, outdoor exercise equipment, and a mountain bike track to enhance recreational opportunities and foster community engagement.

What is the community need?

The Helena River Parkland masterplan addresses the need for increased housing and recreational spaces, creating a large new greenspace and enhancing remnant bushland connectivity. It supports housing growth while providing a focal point for active and passive recreation, fostering community engagement and promoting a healthier lifestyle.

Request

Department of Planning, Lands and Heritage to lead the master planning for the Helena Valley foreshore, involving the Shire of Mundaring, City of Swan and private developers.



ENVIRONMENTAL PRESERVATION



INCREASED HOUSING



SUSTAINABILITY



COMMUNITY



LEGEND

	Helena Valley Active Path		Proposed vegetation
	Secondary Path		Meadow parkland
	Tertiary Path		Turf
			Watercourse

KEY - refer to precedent images

	Playground		Creek crossings
	Parkland		Informal/overflow parking
	Picnic areas		Mountain bike pump track
	Picnic areas with lookout		Sports club rooms and grounds
			Exercise node

8

Review of access to emergency disaster funding

Opportunity

Support a revision of disaster relief funding methodology to enable Local Governments to access essential recovery and emergency relief funds more efficiently.

Expected outcomes:

- Rapid response and recovery after disasters
- Enhanced preparedness in responding to disasters
- Efficient allocation and use of funds, ensuring effective financial resource management during disaster recovery

Project overview

The Shire of Mundaring request consideration of a review of the current Disaster Recovery Funding Arrangements to make the process more streamlined and customer focused. The existing arrangements are complex, time-consuming, and difficult to access, often providing funds months or even years after an event due to stringent compliance requirements.

To address these issues, the Shire proposes the State and Federal Governments consider revising the methodology and providing a one-off \$250,000 advance payment for recognised events, with acquittal required upon completion. This would enable Local Governments to promptly undertake necessary cleanup and recovery works.

What is the community need?

Mundaring, a bushfire-prone area, has faced two significant natural disasters in the past six months—one fire-related and one storm-related. These events, not classified as emergencies under state legislation, impose significant financial stress on the Shire of Mundaring, which must cover all recovery costs. This situation underscores the urgent need for more efficient and supportive disaster recovery funding arrangements to alleviate the financial burden on Local Government.

Request

Urgent review of the Disaster Recovery Funding arrangements to make the process more streamlined and outcomes/customer focused.

Consideration being given to provide a one-off \$250,000 payment in the case of recognised events to allow Local Governments to undertake required clean up works, with acquittal required at completion.



EMERGENCY PREPAREDNESS



COMMUNITY RESILIENCE



FINANCIAL SUPPORT



Road safety and traffic management

Opportunity

Provide a safer road network within the Shire of Mundaring and facilitate efficient traffic movements in and around the Great Eastern Highway.

Expected outcomes:

- Improved road safety reducing accidents and injuries for all road users
- Efficient traffic movements, reducing congestion and travel times
- Improved accessibility boosting local businesses and tourism
- Better connections within and around the Shire, enhancing overall community integration

Project overview

This project requests Main Roads WA to prioritise the design and construction of key intersections at Scott Street and Great Eastern Highway, and Seaborne Street and Great Eastern Highway. The upgrades will focus on enhancing safety and facilitating traffic flow. Specifically, the project aims to:

- Upgrade the Scott Street and Great Eastern Highway intersection
- Upgrade the Seaborne Street and Great Eastern Highway intersection

- Develop an intersection to facilitate easterly movements from Scott Street onto the Great Eastern Highway

What is the community need?

The Great Eastern Highway is a vital link between Perth, Kalgoorlie, and the Eastern States, handling 35,800 vehicles daily. Problematic intersections within the Shire of Mundaring, such as Scott Street in Greenmount (7,500 daily movements) and Seaborne Street in Parkerville (3,800 daily movements), require improvements to ensure a safer road network and more efficient traffic flow.

Request

Staged funding support from Main Roads to cost, design and deliver these road upgrades.



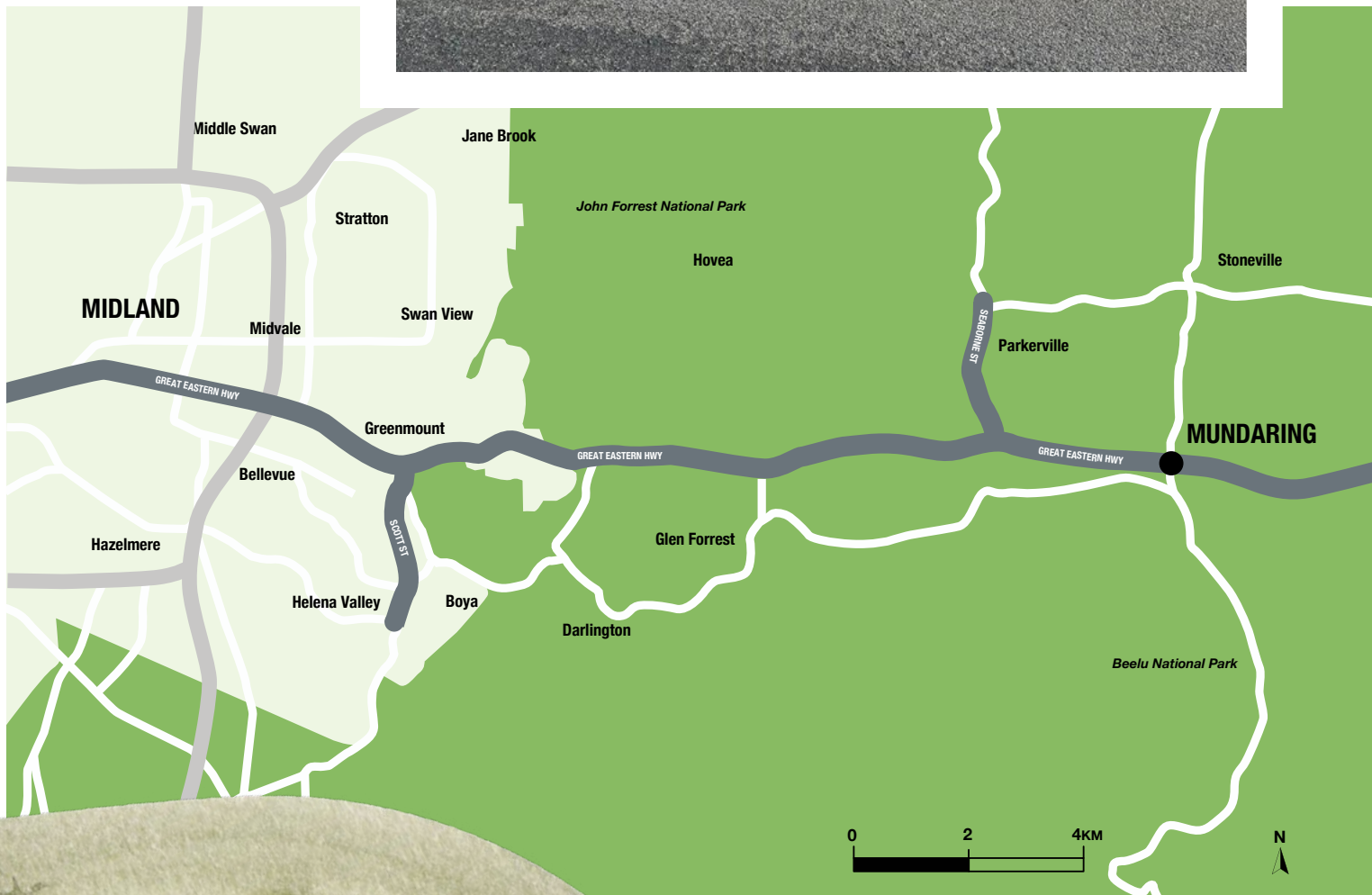
INFRASTRUCTURE IMPROVEMENT



ROAD SAFETY



ECONOMIC CONNECTIVITY



10 *Enhancing bushfire resilience and sustainable development*

Opportunity

Ensure that planning for development within Shire of Mundaring and other bushfire prone areas will result in an appropriate balance between protecting the natural environment and providing for safe and sustainable communities.

Expected outcomes:

- Improved planning and risk management, reducing bushfire risks to lives and property
- Balanced development that respects biodiversity while accommodating growth
- Preservation of natural habitats and ecological balance
- Strengthened infrastructure and resources to withstand bushfire impacts.

Project overview

The Shire of Mundaring, a bushfire-prone area and global biodiversity hotspot, aims to balance bushfire resilience with biodiversity management. This initiative will adapt planning strategies to address climate change impacts and past bushfire lessons, allowing for careful townsite expansion with clear safety benefits. It also seeks to clarify residential development areas, establish comprehensive risk assessments, and provide practical exemptions for local governments to manage risks effectively.

What is the community need?

The Shire of Mundaring requires enhanced bushfire resilience and balanced development strategies to protect lives, properties, and biodiversity in a bushfire-prone area. Clear guidelines and practical exemptions for local governments are essential for effective risk management, swift recovery, and sustainable growth amidst increasing climate change impacts.

Request Shire of Mundaring is seeking changes to existing planning, policy and regulation to enable more favourable outcomes regarding balancing positive environmental outcomes with proposed development.



BUSHFIRE RESILIENCE




SUSTAINABLE DEVELOPMENT



CLIMATE ADAPTION





**For further information
on these projects, contact
Shire of Mundaring CEO
Jason Whiteaker:**

M: 0456 047 404

E: JasonWhiteaker@mundaring.wa.gov.au

mundaring.wa.gov.au